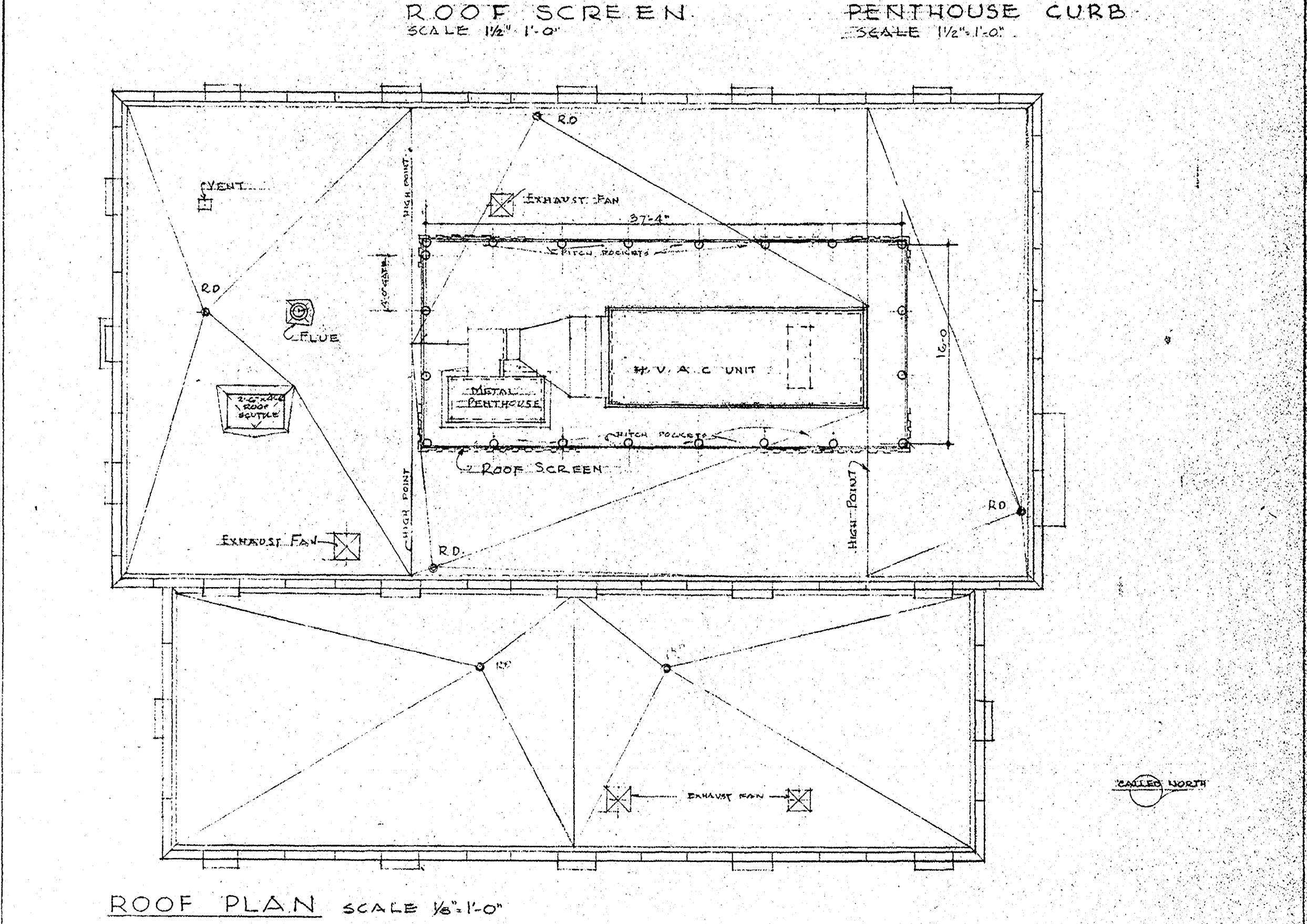
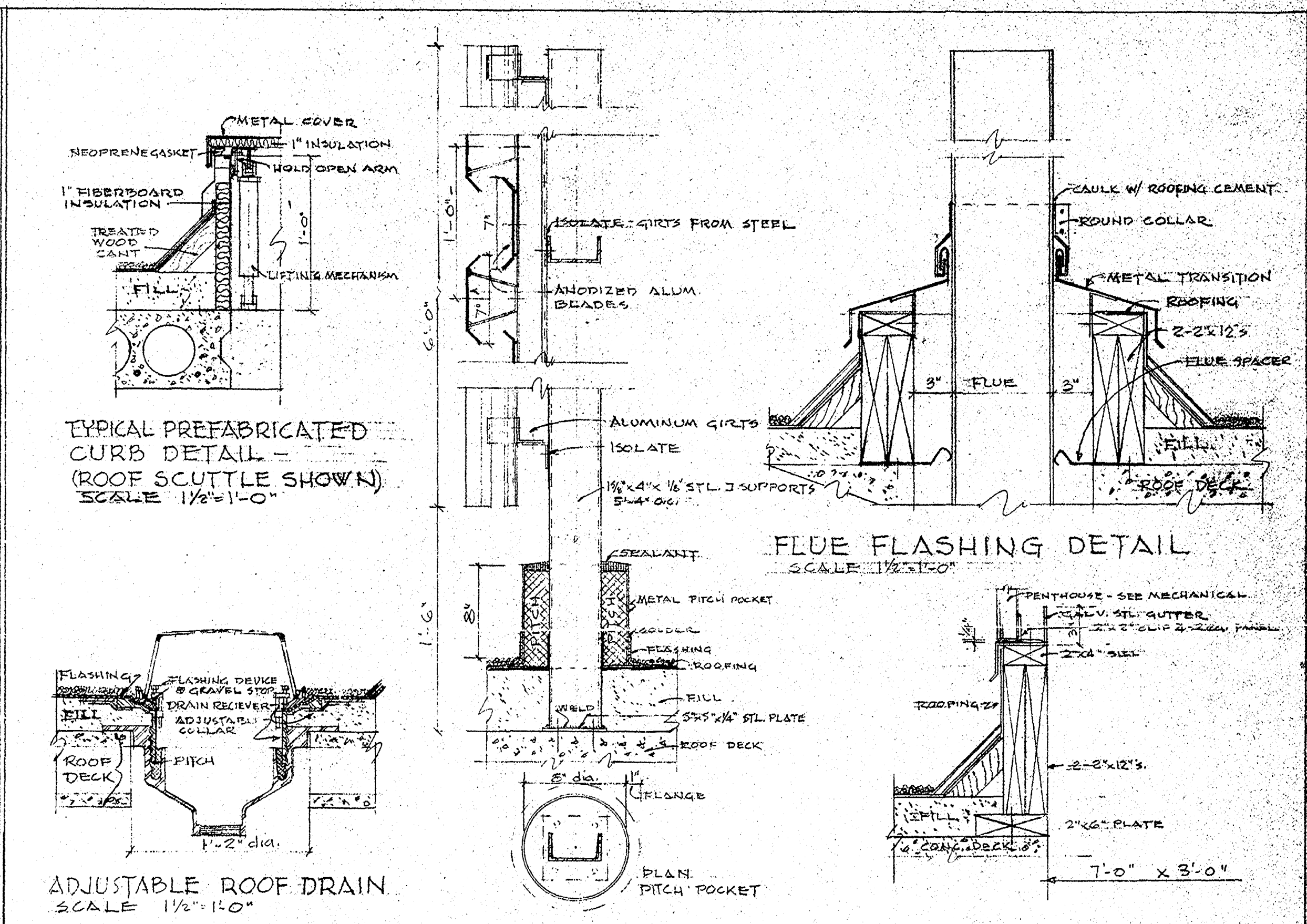
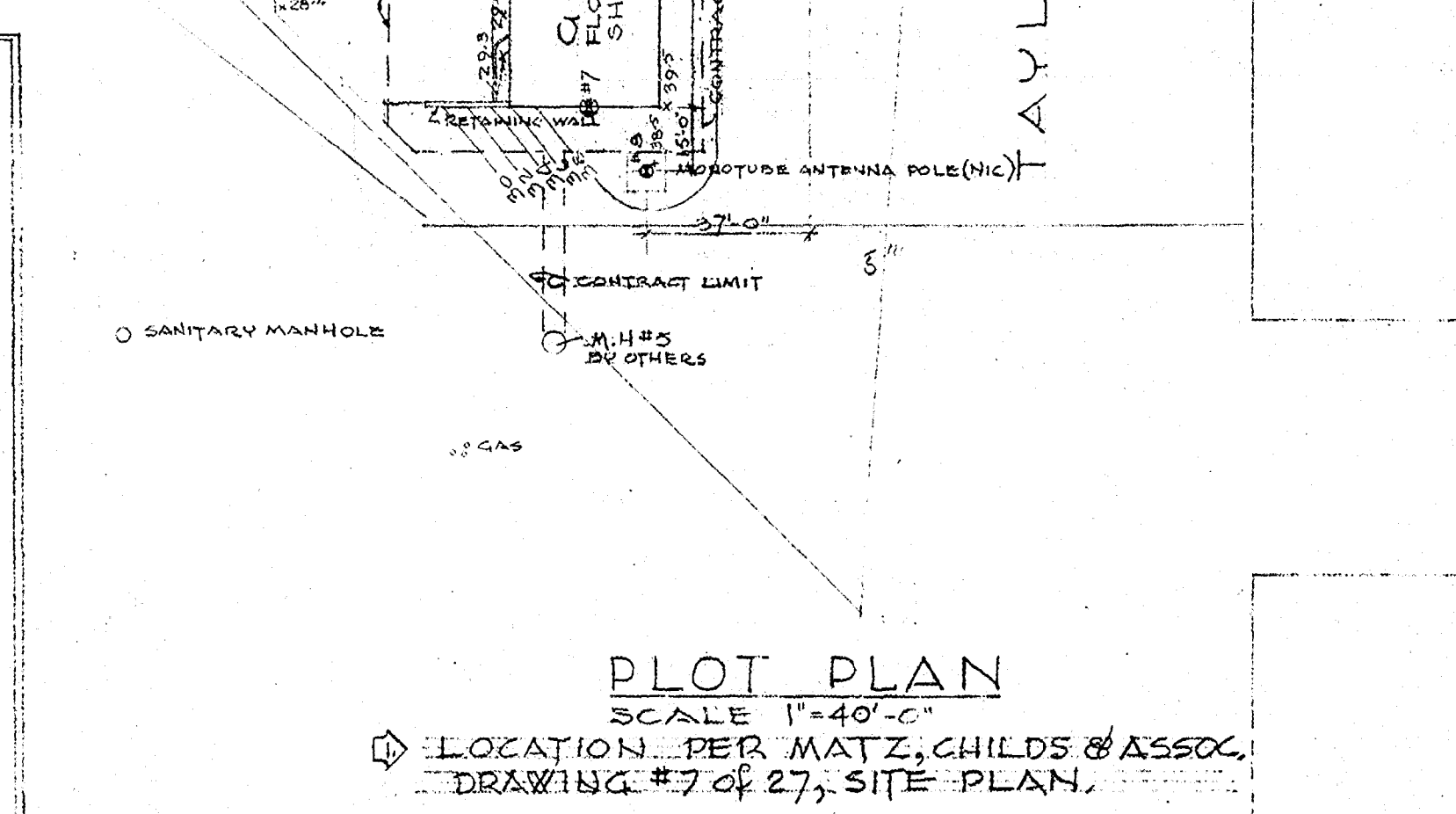


TEST BORINGS
BORINGS BY AMERICAN TESTING & ENGINEERING CO. DEC. 24/69 '65, JAN. 16/70 OTHERS

Boring #	Approx. Elev.	Soil Description
#1	28.9	BROWN & GREEN MORT. SHOW MORT. TO WEST. MEDIUM DENSE SAND. TRACE CLAY.
#2	28.9	BROWN & GREEN MORT. SHOW MORT. TO WEST. MEDIUM DENSE SAND. TRACE CLAY.
#3	28.9	BROWN & GREEN MORT. SHOW MORT. TO WEST. MEDIUM DENSE SAND. TRACE CLAY.
#4	28.9	BROWN & GREEN MORT. SHOW MORT. TO WEST. MEDIUM DENSE SAND. TRACE CLAY.
#5	28.9	BROWN & GREEN MORT. SHOW MORT. TO WEST. MEDIUM DENSE SAND. TRACE CLAY.
#6	28.9	BROWN & GREEN MORT. SHOW MORT. TO WEST. MEDIUM DENSE SAND. TRACE CLAY.
#7	28.9	BROWN & GREEN MORT. SHOW MORT. TO WEST. MEDIUM DENSE SAND. TRACE CLAY.
#8	28.9	BROWN & GREEN MORT. SHOW MORT. TO WEST. MEDIUM DENSE SAND. TRACE CLAY.

NOTES:
① INDICATES BORING LOCATION ON PLOT PLAN, WL INDICATE APPROXIMATE GROUND WATER LEVEL DATE OF BORING
BORINGS #1 THRU #7 TAKEN TO A DEPTH OF 20'. BORING #8 TO A DEPTH OF 25'



LEGEND-

- CONCRETE (abbreviation CONC.)
- CONCRETE BLOCK (FILLED)
- CONCRETE BLOCK (abbreviation CONC.BLK.)
- BRICK
- METAL (SMALL SCALE) (abbreviations - STEEL-STL; ALUMINUM-ALUM.)
- METAL (LARGE SCALE)
- PLASTER OR PLASTERBOARD
- CEMENTIOUS MATERIAL (MORTAR, ROOF FILL, ETC.)
- WOOD
- GRAVEL
- INSULATION
- EARTH

SYMBOLS-

- ②0 SPACE NUMBER-REFERING TO SCHEDULE OF FINISHES
- ④ DOOR NUMBER-REFERING TO DOOR & DOOR FRAME SCHEDULE
- ⊕ WINDOW TYPE
- ↗ SECTION NUMBER OR LETTER; ARROW INDICATES DIRECTION

LOCKE, TYLER, JACKSON & McSHANE ARCHITECTS
344 N. CHARLES ST. BALTIMORE, MD. 21201

EGLI AND GOMPF, INC.
MECHANICAL ENGINEERS
1007 N. CALVERT ST. BALTIMORE, MD.

VAN RENSSELAER P SAXE
STRUCTURAL ENGINEER
1701 ST. PAUL STREET BALTIMORE, MD.

MATZ, CHILDS & ASSOC.
SITE ENGINEERS

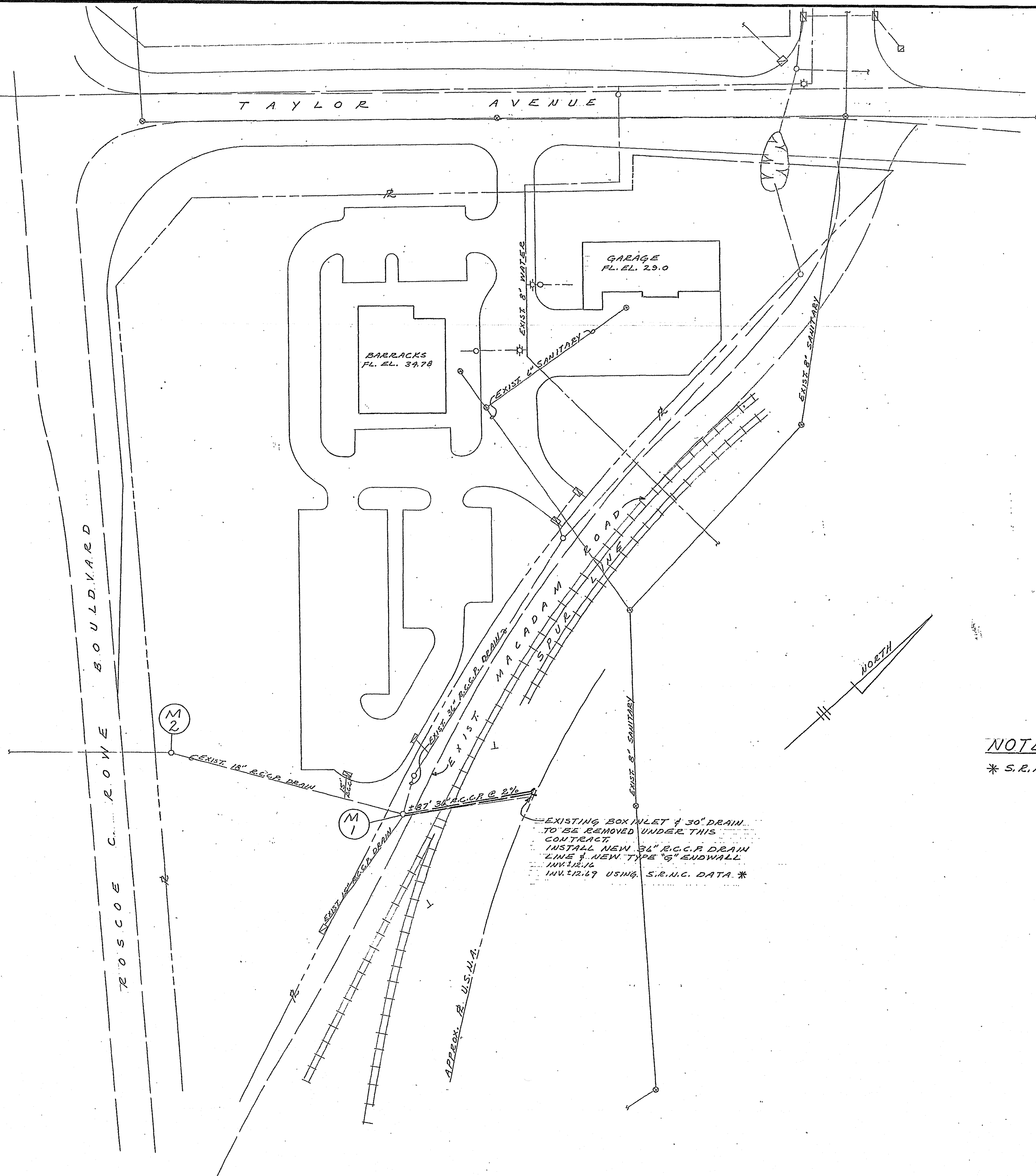
APPROVED
DATE: 9 Apr 70

REVISIONS:
① ADDENDUM 1, JULY 1970

BARRACKS & GARAGE

MARYLAND STATE POLICE
ANNAPOLIS MARYLAND

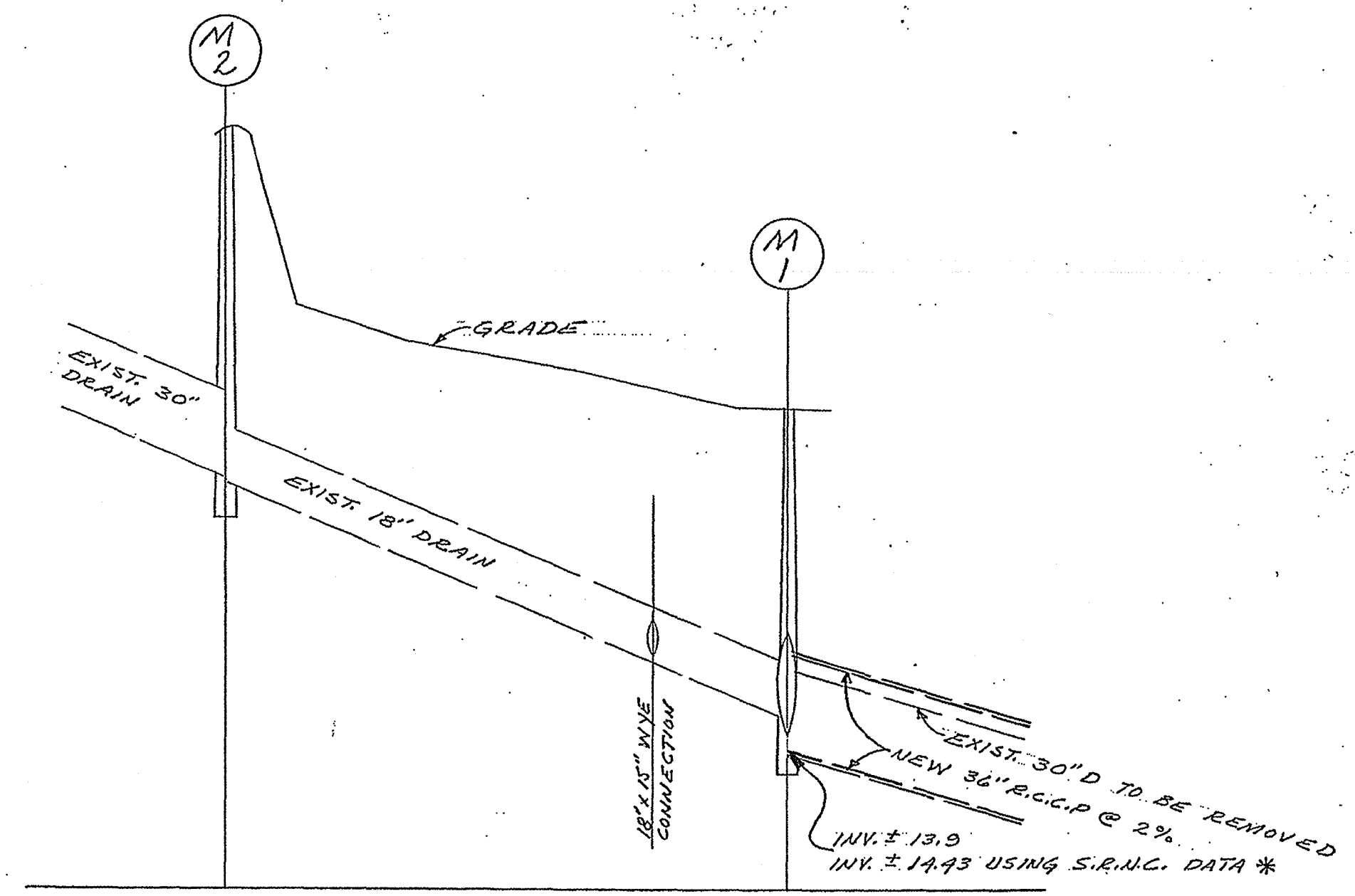
PROJECT NO. SP-664
DRAWING NO. A-1
DATE APRIL 1970



SITE PLAN
SCALE: 1"=40'

EXISTING BOX INLET & 30" DRAIN TO BE REMOVED UNDER THIS CONTRACT. INSTALL NEW 36" R.C.C.P. DRAIN WITH NEW TYPE 'S' ENDWALL. INV. ± 12.16 USING S.R.N.C. DATA *

NOTE:
* S.R.N.C. = SEVERN RIVER NAVAL COMMAND



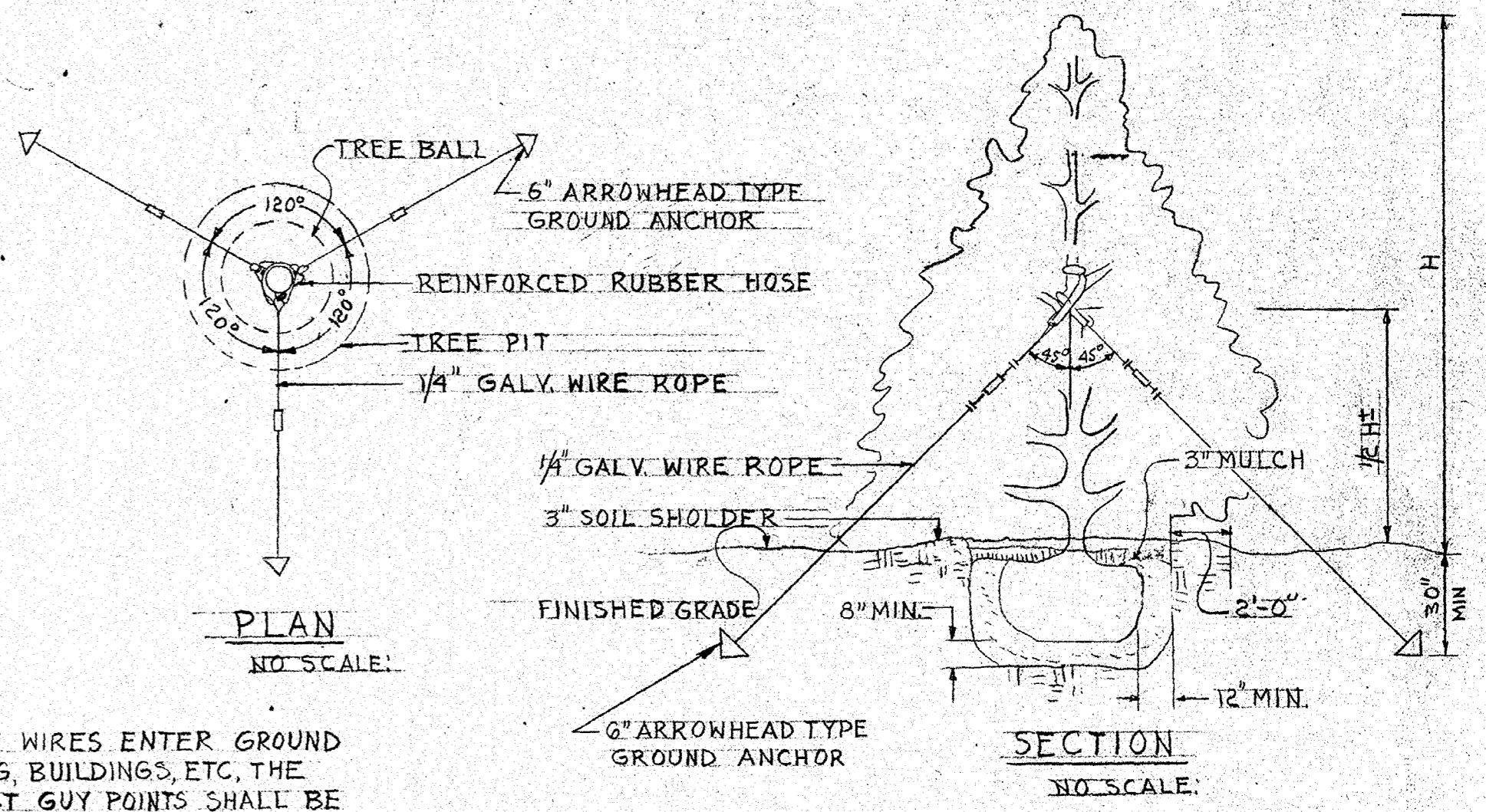
PROFILE
SCALE: HORIZ. 1"=40' - VERT. 1"=4'

CHANGE ORDER DRAWING FOR UTILITIES UNDER CONTRACT
SEE DRAWINGS NO. 13 & 14 OF 27 UNDER REFERENCE JOB NO. THIS CONTRACT

	REVISIONS	MARYLAND STATE POLICE BARRACKS & GARAGE ANNAPOLIS, MARYLAND	DWG NO.
			1
PREPARED BY DEPARTMENT OF GENERAL SERVICES STATE OF MARYLAND		OF 1 SHEETS JOB NO. 286-0313 FUNDS 621-415-320002 DATE 9/4/70	
DRAWN BY: J.M.		CHECKED BY:	

SPECIFICATIONS

1. GENERAL DESCRIPTION AND SCOPE OF WORK
 A. THIS PROJECT SHALL INCLUDE, BUT NOT BE LIMITED TO THE FURNISHING OF ALL SERVICES, MATERIALS AND EQUIPMENT NECESSARY FOR AND INCIDENTAL TO THE INSTALLATION OF PLANT MATERIALS, AS DESCRIBED HEREIN AND ON THIS DRAWING.
 B. THIS PROJECT SHALL COMPLY WITH THE DEPARTMENT OF GENERAL SERVICES INSTRUCTIONS TO BIDDERS AND GENERAL CONDITIONS.
2. PLANTING - MATERIALS AND METHODS:
 A. ALL REQUIREMENTS FOR PLANTING SHALL STRICTLY COMPLY WITH SECTIONS 36.13-1, 2, 3 OF MARYLAND STATE HIGHWAY ADMINISTRATION "SPECIFICATIONS FOR MATERIALS, BRIDGES, AND INCIDENTAL STRUCTURES," DATED MARCH 1968, AND SUPPLEMENTS THERETO.



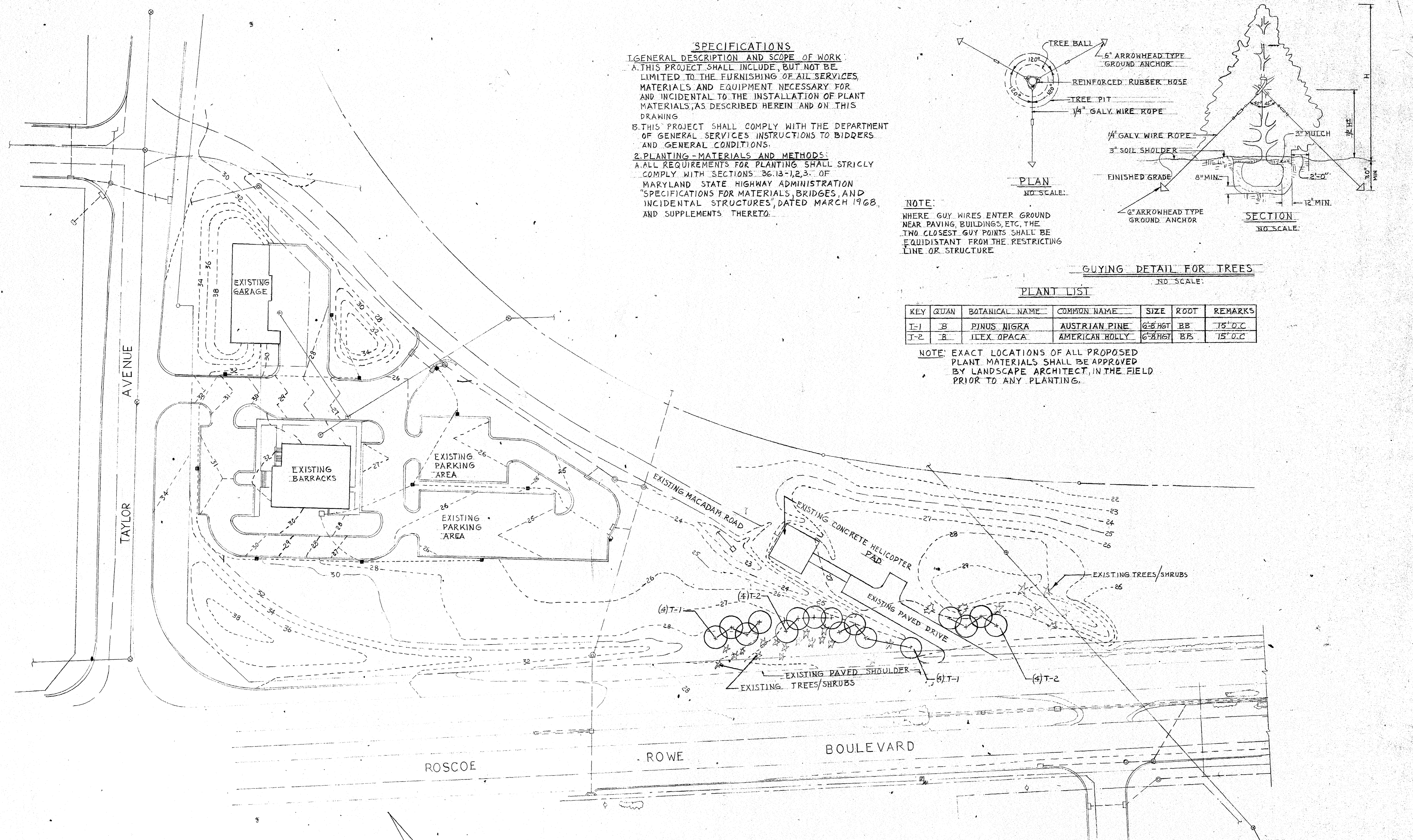
NOTE:
 WHERE GUY WIRES ENTER GROUND NEAR PAVING, BUILDINGS, ETC. THE TWO CLOSEST GUY POINTS SHALL BE EQUIDISTANT FROM THE RESTRICTING LINE OR STRUCTURE

GUYING DETAIL FOR TREES
 NO SCALE

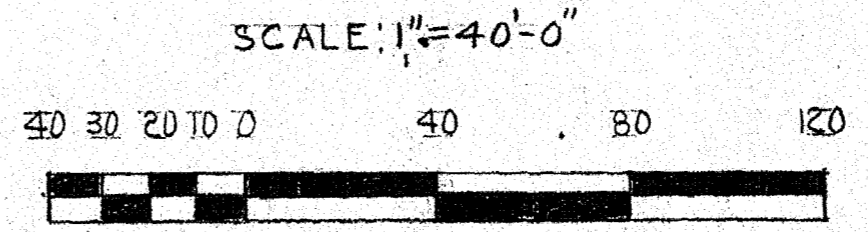
PLANT LIST

KEY	QUAN	BOTANICAL NAME	COMMON NAME	SIZE	ROOT	REMARKS
T-1	8	PNUS NIGRA	AUSTRIAN PINE	6'-8" HGT	BB	15' O.C.
T-2	8	ILEX OPACA	AMERICAN HOLLY	6'-8" HGT	BB	15' O.C.

NOTE: EXACT LOCATIONS OF ALL PROPOSED PLANT MATERIALS SHALL BE APPROVED BY LANDSCAPE ARCHITECT, IN THE FIELD PRIOR TO ANY PLANTING.

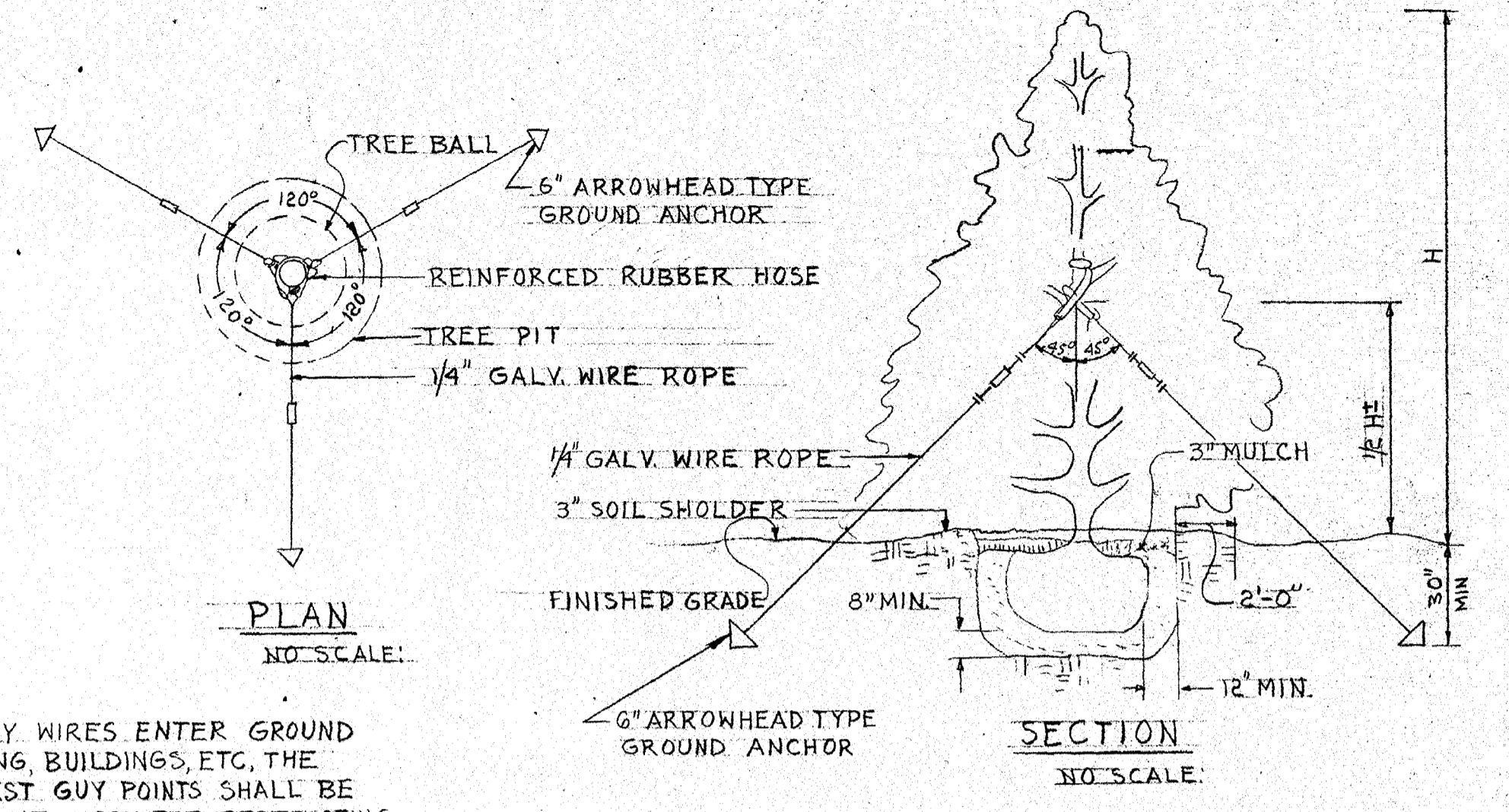


PLANTING PLAN
 SCALE: 1"=40'-0"



OFFICE OF ENGINEERING AND CONSTRUCTION DEPARTMENT OF GENERAL SERVICES STATE OF MARYLAND 301 W. PRESTON ST. BALTIMORE, MD. 21201 DRAWN BY: M. CHECKED BY:		APPROVED PRINCIPAL ENGR. PRINCIPAL S. PLNR. PRINCIPAL ARCH. M. J. [Signature]		APPROVED T. L. Smith [Signature]	NO. DATE REVISIONS	PROJECT NO. 587-5-771(A)
		DATE 1/3/77	DIRECTOR			FUNDS SCL 72 ITEM 10
MARYLAND STATE POLICE BARRACKS 'J' ANNAPOLIS, MARYLAND						DRAWING NO. 1
FILE 5 DRAWING 702						SHEET OF

SPECIFICATIONS
1. GENERAL DESCRIPTION AND SCOPE OF WORK:
 A. THIS PROJECT SHALL INCLUDE, BUT NOT BE LIMITED TO THE FURNISHING OF ALL SERVICES, MATERIALS AND EQUIPMENT NECESSARY FOR AND INCIDENTAL TO THE INSTALLATION OF PLANT MATERIALS, AS DESCRIBED HEREIN AND ON THIS DRAWING.
 B. THIS PROJECT SHALL COMPLY WITH THE DEPARTMENT OF GENERAL SERVICES INSTRUCTIONS TO BIDDERS AND GENERAL CONDITIONS.
2. PLANTING - MATERIALS AND METHODS:
 A. ALL REQUIREMENTS FOR PLANTING SHALL STRICTLY COMPLY WITH SECTIONS 36.13-1, 2, 3, OF MARYLAND STATE HIGHWAY ADMINISTRATION "SPECIFICATIONS FOR MATERIALS, BRIDGES, AND INCIDENTAL STRUCTURES," DATED MARCH 1968, AND SUPPLEMENTS THERETO.

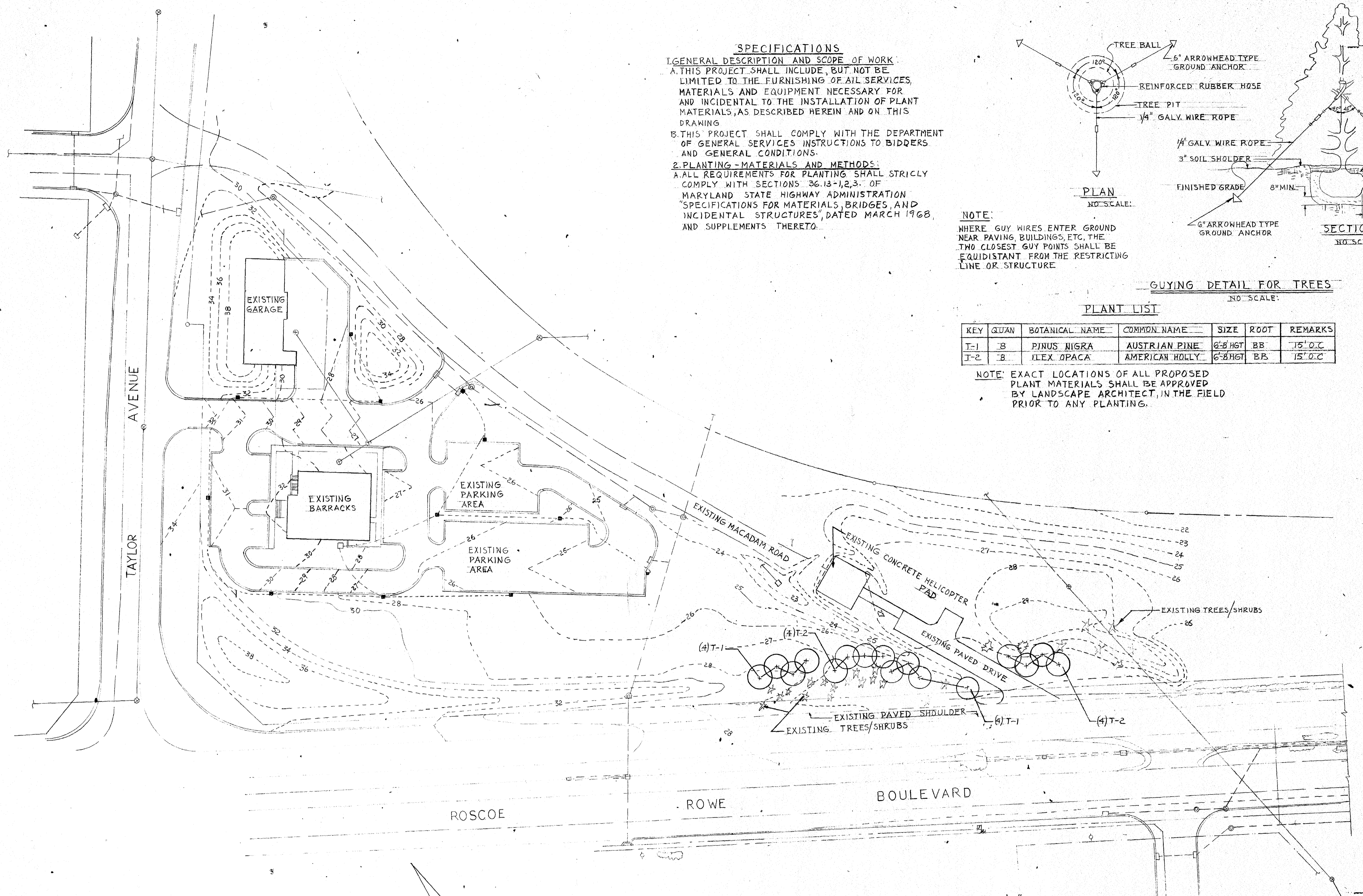


GUYING DETAIL FOR TREES
 NO. SCALE:

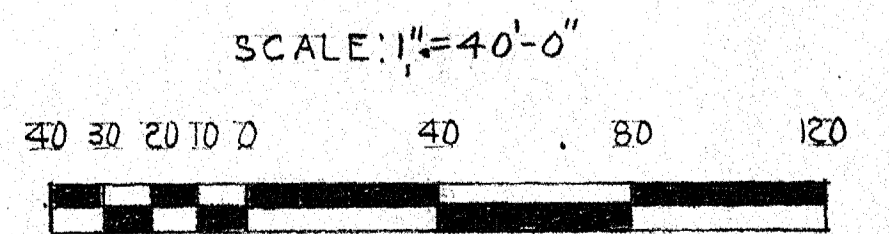
PLANT LIST

KEY	QUAN	BOTANICAL NAME	COMMON NAME	SIZE	ROOT	REMARKS
T-1	8	Pinus nigra	AUSTRIAN PINE	6'-8" HGT	BB	15' O.C.
T-2	8	Ilex opaca	AMERICAN HOLLY	6'-8" HGT	BB	15' O.C.

NOTE: EXACT LOCATIONS OF ALL PROPOSED PLANT MATERIALS SHALL BE APPROVED BY LANDSCAPE ARCHITECT, IN THE FIELD PRIOR TO ANY PLANTING.



PLANTING PLAN
 SCALE: 1"=40'-0"



OFFICE OF ENGINEERING AND CONSTRUCTION DEPARTMENT OF GENERAL SERVICES STATE OF MARYLAND 301 W. PRESTON ST. BALTIMORE, MD. 21201 DRAWN BY: M. CHECKED BY:		APPROVED PRINCIPAL ENGR. PRINCIPAL S. PLNR. PRINCIPAL ARCH.			NO. DATE REVISIONS	PROJECT NO. 571-5-771-(A) FUNDS 32L 72 ITEM 10 DATE DRAWING NO. 1 SHEET OF
		S.E. M.E. E.C. S. PLNR. ARCH. DATE 11/9/77 DIRECTOR				
PLANTING AT MEDIVAC HELIPORT MARYLAND STATE POLICE BARRACKS 'J' ANNAPOLIS, MARYLAND		FILE 5 DRAWING 702				